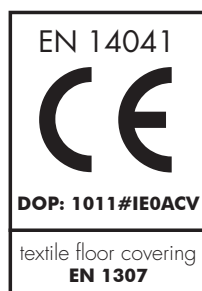


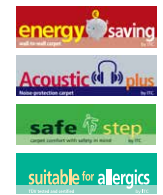
# fortesse SDE new AB

<b>FABRICAGEMETHODE</b> Getuft 1/10" velours COC	<b>MÉTHODE DE FABRICATION</b> Tuftée 1/10" velours COC	<b>HERSTELLUNGSVERFAHREN</b> Getuftet 1/10" COC velours	<b>MANUFACTURING PROCESS</b> Tufting 1/10" cut pile COC
<b>POOLSAMENSTELLING</b> 100% PA IMPREL®	<b>COMPOSITION DU VELOURS</b> 100% PA IMPREL®	<b>POLMATERIAL</b> 100% PA IMPREL®	<b>PILE CONTENT</b> 100% PA IMPREL®
<b>TUFTDOEK</b> geweven PP	<b>SUPPORT</b> tissé PP	<b>TRÄGERMATERIAL</b> PP Bändchen	<b>PRIMARY BACKING</b> woven PP
<b>RUG</b> Action Back	<b>DOSSIER</b> Double dossier synthétique	<b>RÜCKENAUSRÜSTUNG</b> Textilrücken	<b>SECONDARY BACKING</b> Synthetic backing
<b>POOLGEWICHT</b> ca. 730 gr/m <sup>2</sup>	<b>POIDS DU VELOURS</b> ca. 730 gr/m <sup>2</sup>	<b>POLGEWICHT</b> ca. 730 gr/m <sup>2</sup>	<b>PILE WEIGHT</b> ca. 730 gr/m <sup>2</sup>
<b>TOTAAL GEWICHT</b> ca. 1.730 gr/m <sup>2</sup>	<b>POIDS TOTAL</b> ca. 1.730 gr/m <sup>2</sup>	<b>GESAMTGEWICHT</b> ca. 1.730 gr/m <sup>2</sup>	<b>TOTAL WEIGHT</b> ca. 1.730 gr/m <sup>2</sup>
<b>POOLHOOGTE</b> ca. 4 mm	<b>HAUTEUR DU POIL</b> ca. 4 mm	<b>POLHÖHE</b> ca. 4 mm	<b>PILE HEIGHT</b> ca. 4 mm
<b>TOTALE HOOGTE</b> ca. 6 mm	<b>HAUTEUR TOTALE</b> ca. 6 mm	<b>GESAMTHÖHE</b> ca. 6 mm	<b>TOTAL HEIGHT</b> ca. 6 mm
<b>AANTAL NOPPEN</b> ca. 225 000/m <sup>2</sup>	<b>NOMBRE DE POINTS</b> ca. 225 000/m <sup>2</sup>	<b>NOPPENZAHL</b> ca. 225 000/m <sup>2</sup>	<b>NUMBER OF KNOTS</b> ca. 225 000/m <sup>2</sup>
<b>PERMANENT ANTISTATISCH</b> <2 kV	<b>ANTISTATIQUE PERMANENT</b> <2 kV	<b>PERMANENT ANTISTATISCH</b> <2 kV	<b>PERMANENTLY ANTISTATIC</b> <2 kV
<b>GELUIDSISOLATIE</b> ISO 140-8: ca 24 dB delta L	<b>ISOLATION AUX BRUITS D'IMPACT</b> ISO 140-8: ca 24 dB delta L	<b>TRITTSCHALLDÄMMUNG</b> ISO 140-8: ca 24 dB delta L	<b>SOUND INSULATION</b> ISO 140-8: ca 24 dB delta L
<b>GELUIDSABSORPTIE</b> ISO 354: ca 0.20 alpha w	<b>ABSORPTION PHONIQUE</b> ISO 354: ca 0.20 alpha w	<b>SCHALLABSORPTIONSGRAD</b> ISO 354: ca 0.20 alpha w	<b>SOUND ABSORPTION</b> ISO 354: ca 0.20 alpha w
<b>WARMEDOORLAATBAARHEID</b> 0,10 m <sup>2</sup> K/W	<b>RÉSISTANCE THERMIQUE</b> 0,10 m <sup>2</sup> K/W	<b>WÄRMEDURCHLASSWIDERSTAND</b> 0,10 m <sup>2</sup> K/W	<b>THERMAL RESISTANCE</b> 0,10 m <sup>2</sup> K/W
<b>LICHTECHTHEID</b> 5-6	<b>RÉSISTANCE À LA LUMIÈRE</b> 5-6	<b>LICHTECHTHEIT</b> 5-6	<b>LIGHT FASTNESS</b> 5-6
<b>WATERECHTHEID</b> 4-5	<b>RÉSISTANCE À L'EAU</b> 4-5	<b>WASSERECHTHEIT</b> 4-5	<b>WATER RESISTANCE</b> 4-5
<b>BRANDKLASSE</b> Brandklassement C <sub>fl</sub> -s1 alleen bij volledige verkleving	<b>CLASSEMENT FEU</b> Classement feu C <sub>fl</sub> -s1 uniquement en pose collée	<b>BRANDVERHALTENSKLASSE</b> Baustoffkl. C <sub>fl</sub> -s1 nur wenn vollflächig verklebt	<b>FIRE CLASS</b> Fireresistance C <sub>fl</sub> -s1 only with full adhesion

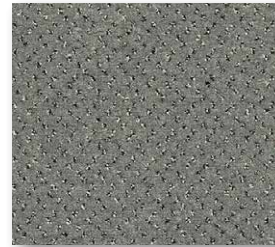
## Colours and widths



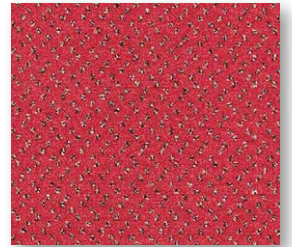
Fortesse	11	12	23	24	40	52	63	64	90	96	136	138
ca 4m	.	.	.	.	.	.	.	.	.	.	.	.
ca 5m	.	.	.	.	.	.	.	.	.	.	.	.
Fortesse	144	148	173	174	176	177	178	197	299			
ca 4m	.	.	.	.	.	.	.	.	.	.	.	.
ca 5m	.	.	.	.	.	.	.	.	.	.	.	.



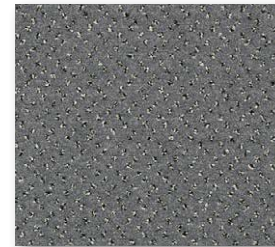
# fortesse SDE new AB



▲ 90



▲ 11



▲ 96



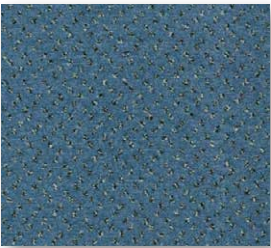
▲ 12



▲ 136



▲ 64



▲ 173



▲ 299



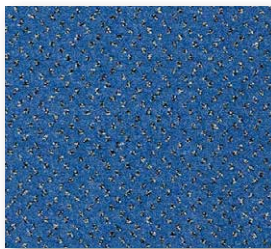
▲ 148



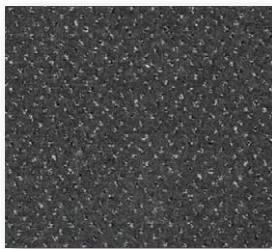
▲ 138



▲ 63



▲ 176



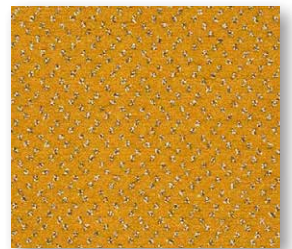
▲ 197



▲ 144



▲ 40



▲ 52



▲ 174



▲ 178



▲ 177



▲ 24



▲ 23