

Stainsafe Super Wiltax

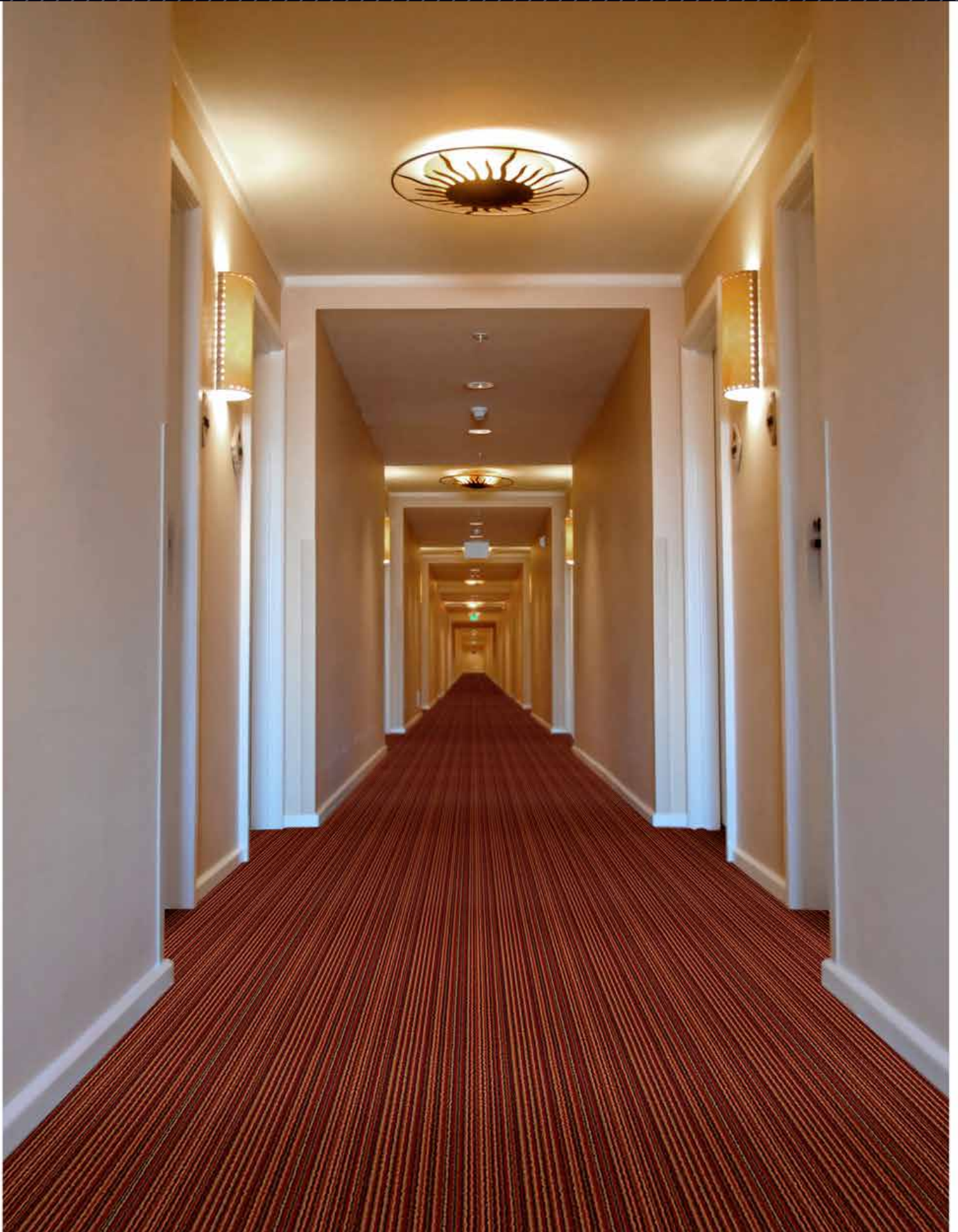
Pubs & Clubs

Fine Lines 1887

40

10

70





▲ Damask 10

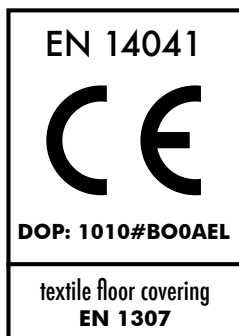


▲ Moss 40



▲ Antique gold 70

Manufacturing process	Woven face-to-face Wilton	Number of points	ca. 750.000/m²
Pile content	100% PP Stainsafe®	Width	400 cm
Pile weight	ca. 2.300 gr/m²	Design Repeat	50 (W) x 1 (H) cm
Total weight	ca. 2.760 gr/m²	Light Fastness	5-6
Pile height	ca. 9,5 mm	Water resistance	4-5
Total height	ca. 12,5 mm	Characteristics	Heavy Domestic / Medium contract use
Shot density	110/10 cm	Thermal resistance	0,16 m² K/W (Tog 1,6)
Warp rate	34/10 cm	Installation	Underlay and gripper rods BS5325



Onder voorbehoud van wijzigingen van de technische specificaties - Sous réserve de modifications techniques - Unter Vorbehalt von Änderungen der technischen Daten - All rights reserved to alter technical specifications. Kijk voor de uitgebreide garantievoorwaarden op www.stain-safe.com - Pour le détail des conditions de garantie, rendez-vous sur www.stain-safe.com - Detaillierte Garantiebedingungen finden Sie auf www.stain-safe.com - For detailed warranty conditions, see www.stain-safe.com

Balta Broadloom
 Wakensteenweg 2, 8710 Sint-Baafs-Vijve • Belgium
 T +32 (0)56 62 22 11 • F +32 (0)56 62 23 55 • broadloom@baltagroup.com • www.baltagroup.com