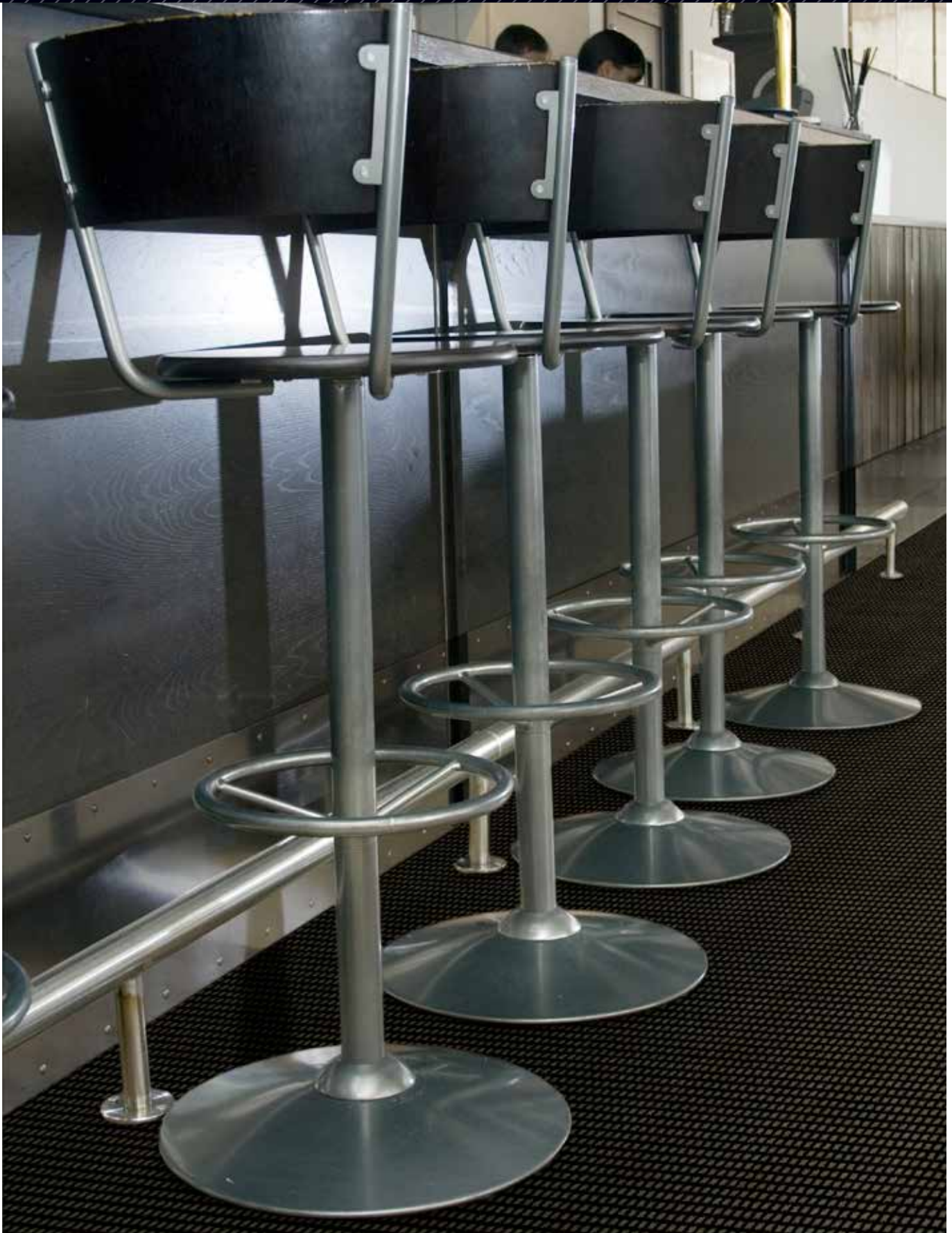
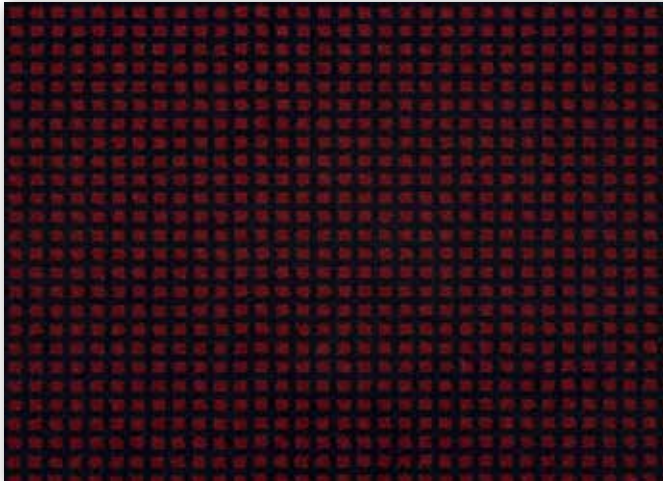


# Stainsafe Super Wiltax Pubs & Clubs

Petite Square 1890

10	60
40	
70	

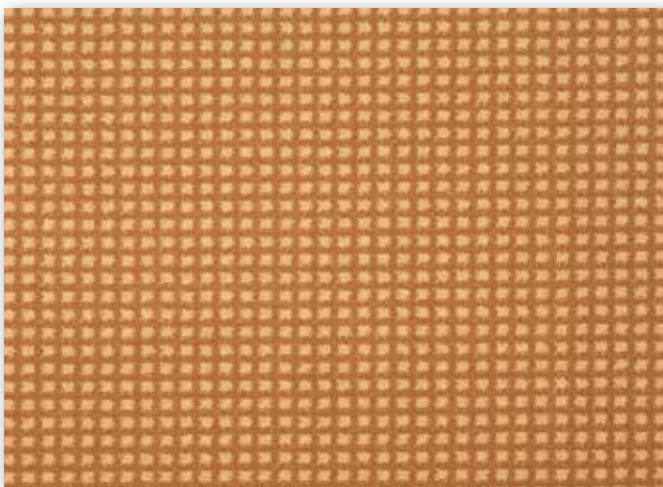




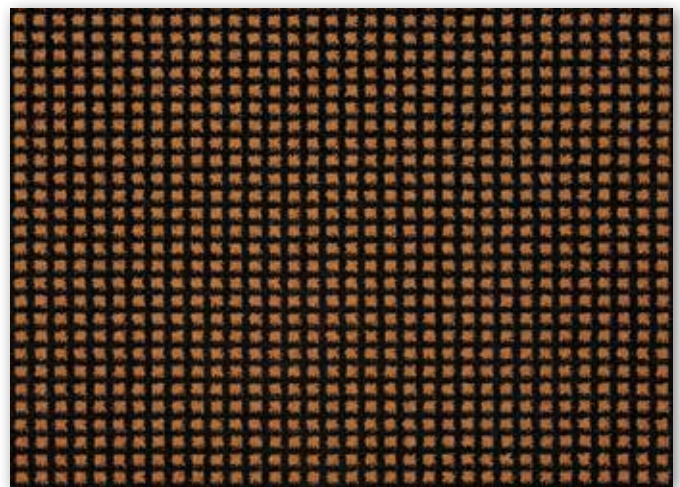
▲ Damask 10



▲ Moss 40

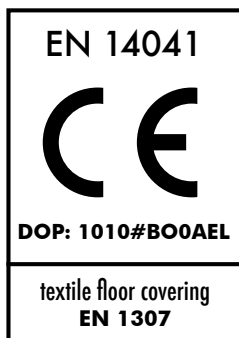


▲ Cream 60



▲ Antique gold 70

Manufacturing process	<b>Woven face-to-face Wilton</b>	Number of points	<b>ca. 750.000/m<sup>2</sup></b>
Pile content	<b>100% PP Stainsafe®</b>	Width	<b>400 cm</b>
Pile weight	<b>ca. 2.300 gr/m<sup>2</sup></b>	Design Repeat	<b>1,5 (W) x 1,33 (H) cm</b>
Total weight	<b>ca. 2.760 gr/m<sup>2</sup></b>	Light Fastness	<b>5-6</b>
Pile height	<b>ca. 9,5 mm</b>	Water resistance	<b>4-5</b>
Total height	<b>ca. 12,5 mm</b>	Characteristics	<b>Heavy Domestic / Medium contract use</b>
Shot density	<b>110/10 cm</b>	Thermal resistance	<b>0,16 m<sup>2</sup> K/W (Tog 1,6)</b>
Warp rate	<b>34/10 cm</b>	Installation	<b>Underlay and gripper rods BS5325</b>



Onder voorbehoud van wijzigingen van de technische specificaties - Sous réserve de modifications techniques - Unter Vorbehalt von Änderungen der technischen Daten - All rights reserved to alter technical specifications. Kijk voor de uitgebreide garantievoorwaarden op [www.stain-safe.com](http://www.stain-safe.com) - Pour le détail des conditions de garantie, rendez-vous sur [www.stain-safe.com](http://www.stain-safe.com) - Detaillierte Garantiebedingungen finden Sie auf [www.stain-safe.com](http://www.stain-safe.com) - For detailed warranty conditions, see [www.stain-safe.com](http://www.stain-safe.com)

Balta Broadloom  
 Wakkensteenweg 2, 8710 Sint-Baafs-Vijve • Belgium  
 T +32 (0)56 62 22 11 • F +32 (0)56 62 23 55 • [broadloom@baltagroup.com](mailto:broadloom@baltagroup.com) • [www.baltagroup.com](http://www.baltagroup.com)