

P M ravel A B

FABRICAGEMETHODE
Getuft 1/10" saxony

POOLSAMENSTELLING
100% PA IMPREL®

TUFTDOEK
non woven PES

RUG
Action Back

POOLGEWICHT
ca. 900 gr/m²

TOTAAL GEWICHT
ca. 1.875 gr/m²

POOLHOOGTE
ca. 4 mm

TOTALE HOOGTE
ca. 7 mm

AANTAL NOPPEN
ca. 170 000/m²

PERMANENT ANTISTATISCH
<2 kV

GELUIDSISOLATIE
ISO 140-8: 24 dB delta L

GELUIDSABSORPTIE
ISO 354: 0.20 alpha w

WARMTEDOORLAATBAARHEID
0,15 m² K/W

LICHTECHTHEID
5-6

WATERECHTHEID
4-5

BRANDKLASSE
Brandklassement C_{fl}-s1
alleen bij volledige verkleving

MÉTHODE DE FABRICATION
Tufteé 1/10" saxony

COMPOSITION DU VELOURS
100% PA IMPREL®

SUPPORT
non woven PES

DOSSIER
Double dossier synthétique

POIDS DU VELOURS
ca. 900 gr/m²

POIDS TOTAL
ca. 1.875 gr/m²

HAUTEUR DU POIL
ca. 4 mm

HAUTEUR TOTALE
ca. 7 mm

NOMBRE DE POINTS
ca. 170 000/m²

ANTISTATIQUE PERMANENT
<2 kV

ISOLATION AUX BRUITS D'IMPACT
ISO 140-8: 24 dB delta L

ABSORPTION PHONIQUE
ISO 354: 0.20 alpha w

RÉSISTANCE THERMIQUE
0,15 m² K/W

RÉSISTANCE À LA LUMIÈRE
5-6

RÉSISTANCE À L'EAU
4-5

CLASSEMENT FEU
Classement feu C_{fl}-s1
uniquement en pose collée

HERSTELLUNGSVERFAHREN
Getuftet 1/10" saxony

POLMATERIAL
100% PA IMPREL®

TRÄGERMATERIAL
PES Vlies

RÜCKENAUSRÜSTUNG
Textilrücken

POLGEWICHT
ca. 900 gr/m²

GESAMTGEWICHT
ca. 1.875 gr/m²

POLHÖHE
ca. 4 mm

GESAMTHÖHE
ca. 7 mm

NOPPENZAHL
ca. 170 000/m²

PERMANENT ANTISTATISCH
<2 kV

TRITTSCHALLDÄMMUNG
ISO 140-8: 24 dB delta L

SCHALLABSORPTIONSGRAD
ISO 354: 0.20 alpha w

WÄRMEDURCHLASSWIDERSTAND
0,15 m² K/W

LICHTECHTHEIT
5-6

WASSERECHTHEIT
4-5

BRANDVERHALTENSKLASSE
Baustoffkl. C_{fl}-s1
nur wenn vollflächig verklebt

MANUFACTURING PROCESS
Tufting 1/10" saxony

PILE CONTENT
100% PA IMPREL®

PRIMARY BACKING
non woven PES

SECONDARY BACKING
Synthetic backing

PILE WEIGHT
ca. 900 gr/m²

TOTAL WEIGHT
ca. 1.875 gr/m²

PILE HEIGHT
ca. 4 mm

TOTAL HEIGHT
ca. 7 mm

NUMBER OF KNOTS
ca. 170 000/m²

PERMANENTLY ANTISTATIC
<2 kV

SOUND INSULATION
ISO 140-8: 24 dB delta L

SOUND ABSORPTION
ISO 354: 0.20 alpha w

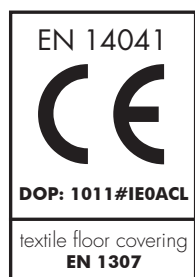
THERMAL RESISTANCE
0,15 m² K/W

LIGHT FASTNESS
5-6

WATER RESISTANCE
4-5

FIRE CLASS
Fireresistance C_{fl}-s1
only with full adhesion

U3P3



Colours and widths ⇄ 8 cm x ⇄ 8 cm

Ravel	10	26	33	43	64	73	95	97
ca 4m	▪	▪	▪	▪	▪	▪	▪	▪

REG.NR **B8C23F74**
www.pro-dis.info

EMissions - CARPETS TESTED FOR A BETTER LIVING ENVIRONMENT - GUT TESTED

CE, GRI, and other certification icons

Balta PA 6 / 111
Balta Industries N.V.
Wakkensteenweg 2
8710 Sint-Baafs-Vijve
Belgien
Z-156.601-1047

IFI
Textiles & Flooring Institute GmbH

Emissionsgeprüfter Bodenbelag nach
DIBT-Grundsätzen

EMISSIENS DANS L'AIR INTÉRIEUR

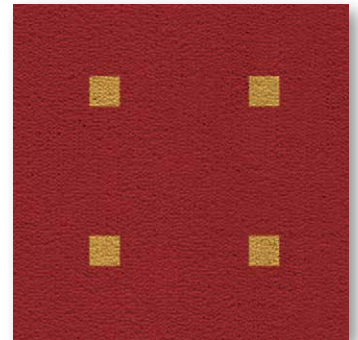
A+
A+ A B1 C

TUV NORD
Systeme
TUV NORD Systeme
GmbH & Co. KG
Prüfungszentrum
Humboldt-Strasse 1
42699 Solingen

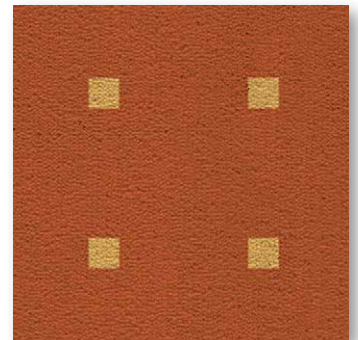
Für Allergiker geeignet
Teppichboden aus
allergenkontrolliertem
Material
3.2-2384/05

energy saving
Acoustic plus
safe step
suitable for allergies

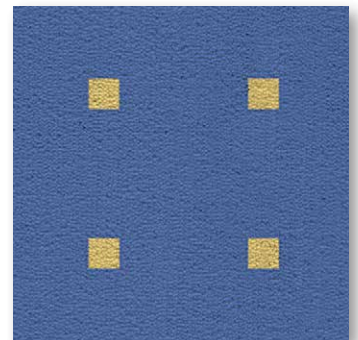
PM **ravel** AB



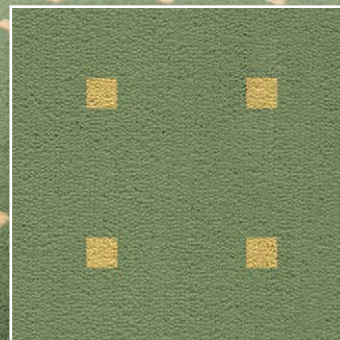
▲ 10



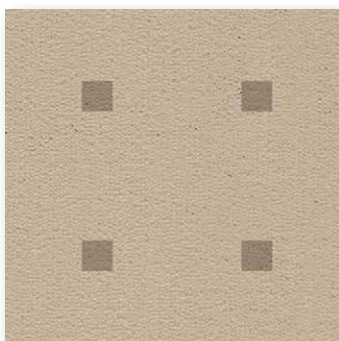
▲ 64



▲ 73



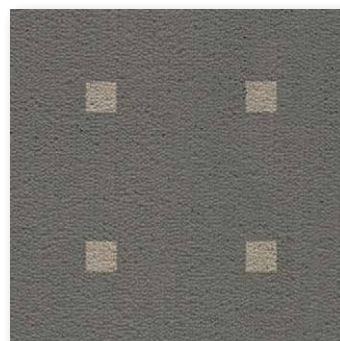
▲ 26



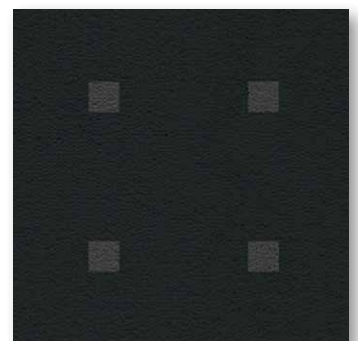
▲ 33



▲ 43



▲ 95



▲ 97